

ZoneDirector™ 3000

Enterprise-Class Smart Wireless LAN Controller



The First Simple and Powerful Enterprise Smart Wireless LAN Controller

The Ruckus Wireless ZoneDirector 3000 is the first enterprise-class Smart Wireless LAN system that delivers a secure, robust and easily expandable WLAN solution at an unmatched total cost of ownership.

Capable of managing up to 250 ZoneFlex 802.11g and 802.11n Smart Wi-Fi access points from a central point, the Ruckus ZoneDirector 3000 is designed for simplicity and ease of use.

Unlike conventional wireless LAN systems that are costly, complex and cumbersome to deploy, the ZoneDirector 3000 is ideal for any enterprise that requires a high-performance wireless LAN that can be easily deployed and managed. The ZoneDirector 3000 integrates advanced features such as intelligent beam steering, smart wireless meshing and dynamic Wi-Fi security not found in any other WLAN system.

The Ruckus ZoneDirector 3000 can be deployed and operated by non-wireless experts and installed quickly and easily. Any organization with limited IT staff and budget can create a robust and secure multimedia WLAN in a matter of minutes.

The Ruckus ZoneDirector easily integrates with network, security and authentication infrastructure already in place and is easily configured through a point-and-click web wizard. Ruckus ZoneFlex access points (APs) automatically discover and are configured by the ZoneDirector.

Redundant and secure, the Ruckus ZoneDirector provides WLAN-wide network, security, RF and location management within a single, easy-to-use and affordable WLAN system.

BENEFITS

Unmatched scalability

Supporting up to 250 APs, the ZoneDirector 3000 can easily serve the largest campus deployments

Ruckus SmartMesh™ streamlines costly and complex deployment

Integrated Ruckus SmartMesh technology automates deployment, eliminates the need to run Ethernet cable to every Smart Wi-Fi access point

Simple to use, simple to manage

Centralized management, quick setup, IT-Lite and automatic, real-time optimization of entire WLAN

IT lite deployment in 5 minutes or less

Web-based configuration wizard lets any computer user configure an entire WLAN in minutes. Ruckus ZoneFlex APs auto-discover the ZoneDirector

Flexible deployment options

The ZoneDirector interacts with existing network and security infrastructure and provides dynamic RF management across APs to eliminate AP placement issues

Easy monitoring and troubleshooting

Customizable dashboard provides comprehensive at-a-glance network snapshot and allows drill down to troubleshoot wireless problems

Automatic user security

Eliminates the requirement to configure and update individual PC client devices with unique encryption keys

Complete integration

Combines network management, dynamic RF management, location management and AP control within a low-cost solution

Advanced WLAN features and functions

Role-based user policies, internal authentication database, rogue AP detection and client thresholds per AP



Specifications

PHYSICAL CHARACTERISTICS

POWER	<ul style="list-style-type: none"> External power adapter Input: 110–240V AC Output: 12V DC, 1A
PHYSICAL SIZE	<ul style="list-style-type: none"> 25cm(L), 15.93cm(W), 3.86cm(H)
WEIGHT	<ul style="list-style-type: none"> 2.2 lbs (1 kilogram)
ETHERNET PORTS	<ul style="list-style-type: none"> 2 ports, auto MDX, auto-sensing 10/100/1000 Mbps, RJ-45
LED DISPLAY	<ul style="list-style-type: none"> Power/status
ENVIRONMENTAL CONDITIONS	<ul style="list-style-type: none"> Operating Temperature: 32°F (0°C)–122°F (50°C) Operating humidity: 15%–95% non-condensing

MANAGEMENT

CONFIGURATION	<ul style="list-style-type: none"> Web user interface, FlexMaster
STATISTICS	<ul style="list-style-type: none"> LAN, wireless and associated stations (available via UI)
AUTO AP SOFTWARE UPDATES	<ul style="list-style-type: none"> Supported
CAPTIVE PORTAL	<ul style="list-style-type: none"> Supported
GUEST ACCOUNTS	<ul style="list-style-type: none"> Supported
VLAN SUPPORT	<ul style="list-style-type: none"> 802.1Q (per BSSID)
DHCP SERVER	<ul style="list-style-type: none"> Supported
AP DISCOVERY & CONTROL	<ul style="list-style-type: none"> Layer-2 or Layer-3
WLANs (BSSIDs)	<ul style="list-style-type: none"> Up to eight

SECURITY

WIRELESS SECURITY	<ul style="list-style-type: none"> WEP, WPA-TKIP, WPA2-AES, 802.11i
AUTHENTICATION	<ul style="list-style-type: none"> 802.1X, local database External AAA servers: ActiveDirectory, RADIUS
LOCAL AUTHENTICATION	<ul style="list-style-type: none"> 1000 user entries

MULTIMEDIA AND QUALITY OF SERVICE

VoIP TUNNELING	<ul style="list-style-type: none"> Supported
802.11e	<ul style="list-style-type: none"> Supported
SOFTWARE QUEUES	<ul style="list-style-type: none"> Per traffic type, per client
AUTO-CLASSIFICATION	<ul style="list-style-type: none"> Heuristics
RATE LIMITING	<ul style="list-style-type: none"> Supported

CERTIFICATIONS

COUNTRIES	<ul style="list-style-type: none"> FCC (U.S.), IC (Canada), CE (EU), C-Tick (Aus/NZ), and OFTA (Hong Kong)
------------------	---

PERFORMANCE AND SUPPORTED CONFIGURATIONS

NUMBER OF MANAGED APs	<ul style="list-style-type: none"> Up to 50
CONCURRENT STATIONS	<ul style="list-style-type: none"> Up to 1250



Product Ordering Information

Model	Description
ZoneDirector Smart WLAN Controllers	
901-1006-XX00	ZoneDirector 1006 supporting up to 6 ZoneFlex APs
901-1012-XX00	ZoneDirector 1012 supporting up to 12 ZoneFlex APs
901-1025-XX00	ZoneDirector 1025 supporting up to 25 ZoneFlex APs
901-1050-XX00	ZoneDirector 1050 supporting up to 50 ZoneFlex APs
901-7942-XX01	Smart Wi-Fi 802.11n access point with Power over Ethernet, wall/ceiling mount
901-2942-XX01	2-port Smart Wi-Fi 802.11g access point with Power over Ethernet, wall/ceiling mount
901-2925-XX01	5-port Smart Wi-Fi 802.11g access point for user space deployment

PLEASE NOTE: When ordering you must specify the destination region by indicating -US, -EU, -UN or -UK instead of XX.

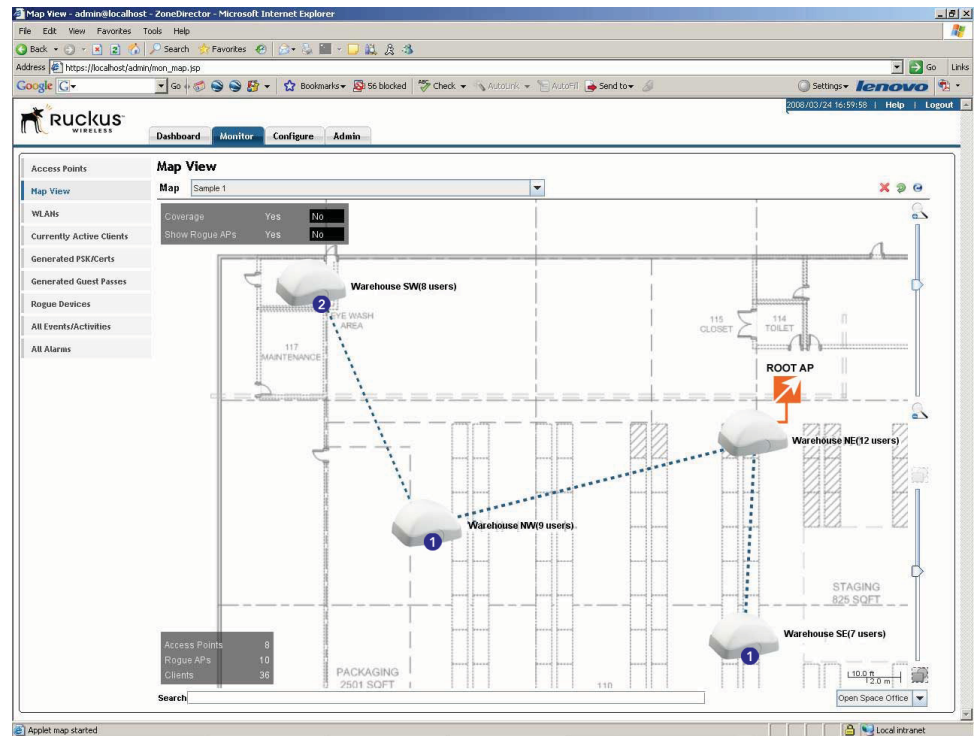


Ruckus Wireless, Inc.

880 West Maude Avenue, Suite 101, Sunnyvale, CA 94085 USA

(650) 265-4200 Ph \ (408) 738-2065 Fx

The ZoneDirector 3000 provides a detail map view that lets administrators quickly see the Wi-Fi network topology for all ZoneFlex Smart Wi-Fi access points.



First-time users simply plug their computers into the LAN and specify a URL that directs them to a captive Web portal for a one-time authentication. Upon authentication, the ZoneDirector automatically configures the user's system with the designated SSID and a unique, dynamically generated encryption key. The key can be removed automatically upon expiration or manually when the user or the user's device is no longer trusted.

Ruckus SmartMesh Increases Flexibility, Reduces Costs

SmartMesh enables self-organizing and self-healing wireless meshing. SmartMesh eliminates the need to run Ethernet cabling to every Smart Wi-Fi AP, so administrators simply plug ZoneFlex APs into any power source and walk away. All configuration and management is delivered through the ZoneDirector Smart WLAN platform. Leveraging patented Ruckus Smart Wi-Fi technology that provides extended range and dynamic signal controls, SmartMesh minimizes inter nodal hops that degrade performance, automatically adapts Wi-Fi connections between nodes to environmental changes and requires fewer APs to be deployed.

Avoid Interference, Maximize Performance and Extend Reach with BeamFlex

Ruckus BeamFlex™, a patented Wi-Fi beam-steering technology, automatically delivers ensures predictable performance for multimedia traffic applications, extends range to eliminate Wi-Fi deadspots. With the ZoneDirector, the value of BeamFlex is extended beyond a single access point to the system-wide WLAN and Smart Wi-Fi meshing. The ZoneDirector automatically controls the channels assignments and transmit power levels of all ZoneFlex Smart Wi-Fi APs.

With BeamFlex, the ZoneFlex system continuously picks the best path for every packet to client as well as among mesh APs — automatically avoiding interference to guarantee the highest quality of service.

FEATURES

- Centralized configuration of up to 50 Ruckus ZoneFlex APs
- Centralized software upgrades
- SmartMesh control and monitoring
- Real-time client admission control
- Easy discovery from PC using UPnP
- Easy-to-use setup wizard
- Customizable dashboard
- Dynamic RF channel and power management
- Integrated captive portal
- ActiveDirectory and RADIUS support
- Local authentication database
- Guest accounts and Terms of Use
- Dynamic PSK and IT-Lite configuration
- Rogue AP detection and graphical map view
- Event management
- Performance monitoring and statistics
- N+1 redundancy
- Manage multiple locations and ZoneDirectors with FlexMaster
- Two 1000 Mbps ports for full redundancy

